

---

## Sargo 36 Explorer

---

Price:€404,500 Tax Paid



Sargo - winner of the Motor Boat of the Year Awards 2013

This Sargo 36 Explorer edition has the Volvo D6-400 fitted, anthracite grey hull, large partially transparent sunroof, bow thruster, diesel heating, Garmin chartplotter, automatic trim tabs, LED lights, fridge, combination microwave @ oven-2 burner gas hob as standard with many others.

Sargo - the All Season boat for those who don't want to be constrained by the weather

Also available with flybridge option

## Specification

### BUILDER/DESIGNER

**Year:** 2018  
**Builder:** Sarin Batar  
**Designer:** Thomas Sarin  
**Construction:** Fiberglass

### DIMENSIONS

**Length:** 38.71 feet  
**Beam:** 3.65 m  
**Min Draft:** 1.1 m  
**Max Draft:** 1.1 m  
**Length Overall:** 11.8 m

### ENGINES

### TANKS

**Water:** 0 x 300l  
**Fuel:** 0 x 600l  
**Holding:** 0 x 100l

### ACCOMMODATION

**Double Berths:** 2  
**Twin Berths:** 1  
**Cabins Berths:** 2  
**Heads:** 1

### LOCATION

Unknown,Finland

## Inventory

### BOAT STRUCTURE

- Hand laminated fibreglass
- Grey non skid deck @ light grey wheelhouse
- Grey hull @ roof edge; white water lines
- 40 mm black rails on deck
- 30 mm black rails on roof, cabin back wall and front deck
- Heavy duty black bollards (6)
- Stainless steel keel protection
- 6 big fenders + fender socks (black)
- Folding boarding ladder
- Step on inside of deck at the side doors
- Swim platform with teak inspection hatch for stern drive
- Heavy duty rubrail around the boat and swim platform
- Flush windows with steering cabin; sides tinted
- Large sun roof 1,25 x 1,9 m (4,1ft x 6,2ft) and 3 windows
- Electrically operated large engine hatch
- Single level grey coloured deck for easy handling
- Benches (2) with storage behind wheelhouse
- Teak on aft deck benches and between rails in bow
- Storage boxes for lines in the aft bench back corners
- Storage box for lines and anchor in bow
- Hull divided in 2 watertight sections and separate bilge pumps
- Durable laminated teak floor with carpet on top
- Insulated outer walls in wheelhouse and cabins
- Hull sides and stringers filled with foam
- Ceiling roof panels with grey textile
- Grey niroxx textiles in wheelhouse
- Lacquered walnut interior
- Grey Sunbrella in front @ aft cabin

### WHEELHOUSE

- 2 side doors with lock and ventilation mode
- Door in wheelhouse back wall and opening rear window
- Large L-sofa and turntable passenger chair
- Offshore chairs also slide front-back
- Walnut table by the sofa; integrated bar cabinet
- Storage under galley, chairs, and under roof
- Shelf on the wheelhouse back wall
- Instrument panel under roof in wheelhouse
- Galley with sink, Warm @ cold water and 80 l refrigerator
- Water tank 300 litre
- Propane ceramic 2 burner stove + micro-wave oven/oven
- Gas alarm with remote controlled shutoff valve from galley
- Defroster with blowers at windshields and wheelhouse
- Diesel heater (5 kw) with blowers in all cabins and heads
- Adjustable steering console in anthracite grey colour with leather covered wheel @ grab bars
- Instrument box for plotter in front of steering wheel
- Ocean Air blinds in wheelhouse
- Matt polished/black leather inside rails

### FRONT CABIN

- Double berth (140x200) with LED reading lights
  - Storage boxes (3) under the berth
  - Storage lockers on both sides with shelves / clothes rail
  - Deck hatch with mosquito nets / Blackout Curtains
  - Fixed hull portholes
- TOILET / SHOWER ROOM
- Large size electric head
  - Separate shower stall
  - Power ventilation @ opening portholes with mosquito net

## MIDDLE CABIN

- Double berth 120 x 200cm (47in x 78,5in)
- Single berth 70 x 200cm (27,5 in x 78,5 in)
- With filler plate one very large berth 220 x 200 cm (86,5in x 78,5in)
- Wardrobes along the starboard side + large walk-in closet
- Opening deck porthole and 1 fixed hull porthole

## TECHNICAL EQUIPMENT

- Remote control for main battery switches in wheelhouse
- AGM service free batteries (separate start and service)
- Integrated bow thruster (6 hp) with designated battery
- LED interior and exterior lights
- Interval wipers with stainless steel double wiper arms
- Black switch panel with Explorer logo
- Black engine instruments
- Radio/Cd/USB with 2 speakers in wheelhouse
- Shore power with 80 Ah charger + monitoring panel
- Inverter 2000W (360 Ah service batteries)
- 230V outlet in both cabins, galley, toilet @ steering console
- 12V outlet at steering console
- Backlit switches in wheelhouse
- Adjustable steering console with wheel and remote control
- Leather covered wheel with knob
- Trim tabs @ Volvo Penta PTA (Power Trim Assistant)
- Chart plotter 12" Garmin + sea chart and Garmin VHF
- Septic tank (100 l) with level indicator and electrical pump
- External fitting on deck for septic pump-out
- Separate fuel tanks + diesel filter with water separator
- Fire extinguisher in engine room + indicator at console
- Compass
- Remote controlled searchlight installed at radar arch
- Electrical bilge pump with automatic switch (2 pcs,)
- Chart reading lights over chart table
- Boat hook attached behind the wheelhouse

## DISCLAIMER

The Company offers the details of this vessel in good faith but cannot guarantee or warrant the accuracy of this information nor warrant the condition of the vessel. A buyer should instruct his agents, or his surveyors, to investigate such details as the buyer desires validated. This vessel is offered subject to prior sale, price change, or withdrawal without notice.

## Photo Gallery



Sargo 36 Explorer - aft deck



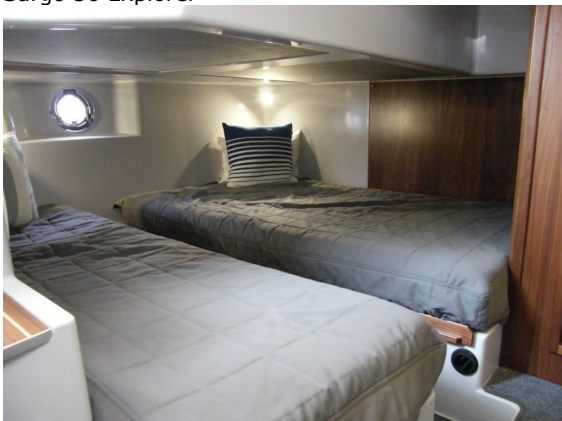
Sargo 36 Explorer - forecabin



Sargo 36 Explorer



Sargo 36 Explorer



Sargo 36 Explorer - aft cabin



Sargo 36 Explorer - helm



Sargo 36 Explorer - saloon